

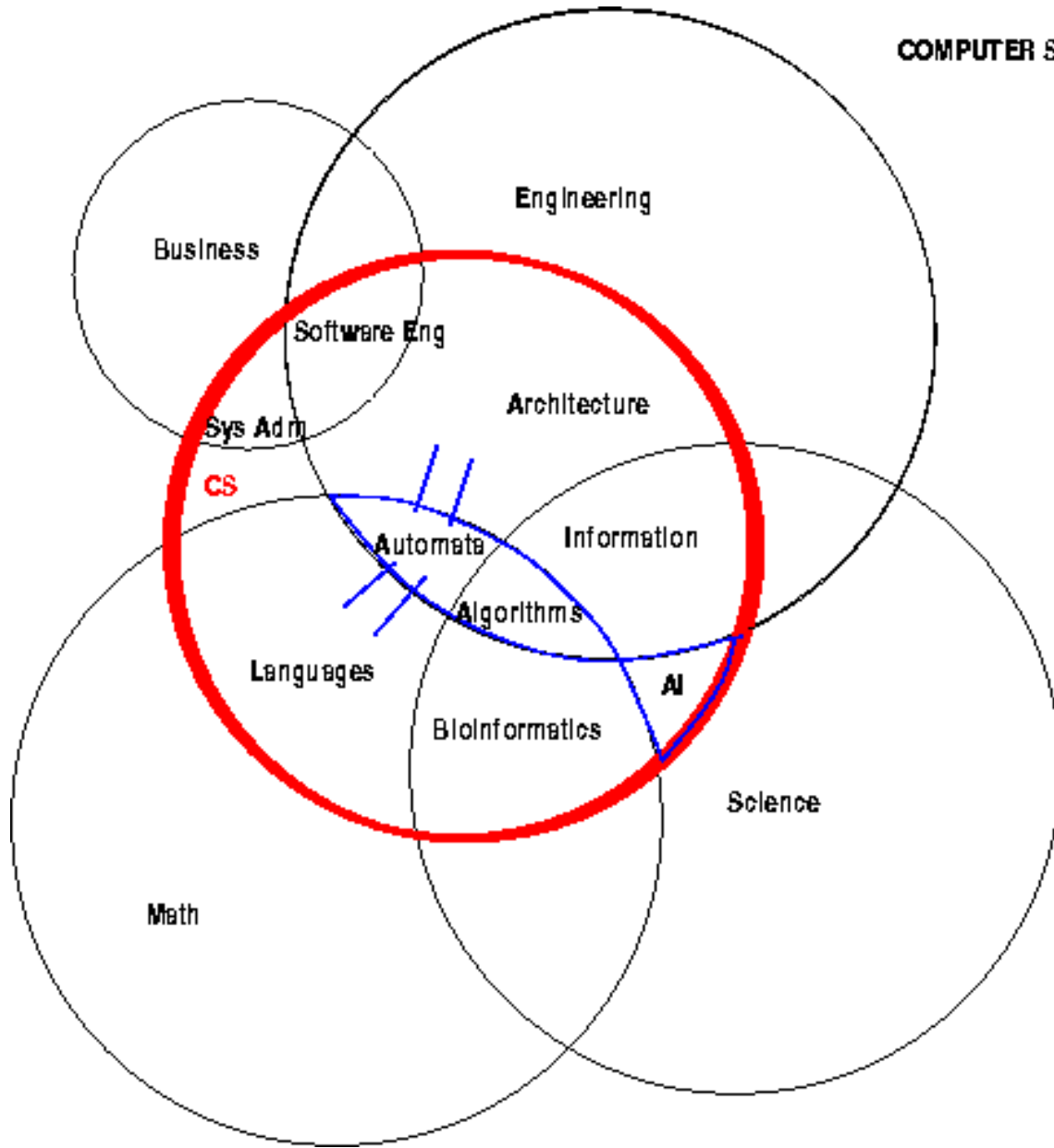


Turing Computer Science II

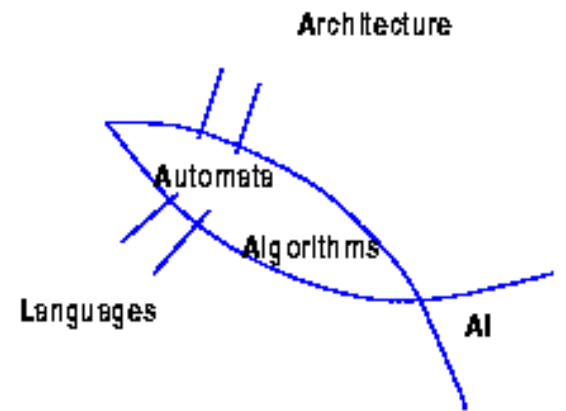
Ernesto Gomez

Keith Evan Schubert

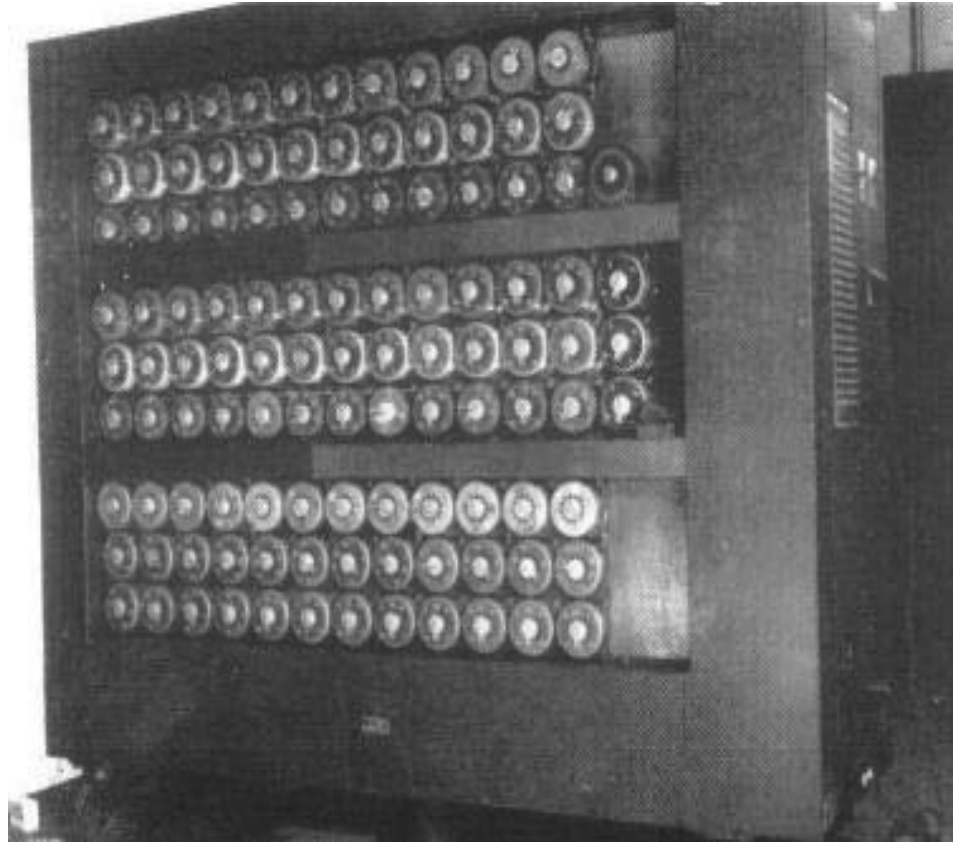
COMPUTER SCIENCE KNOWLEDGE SET



Turing fish

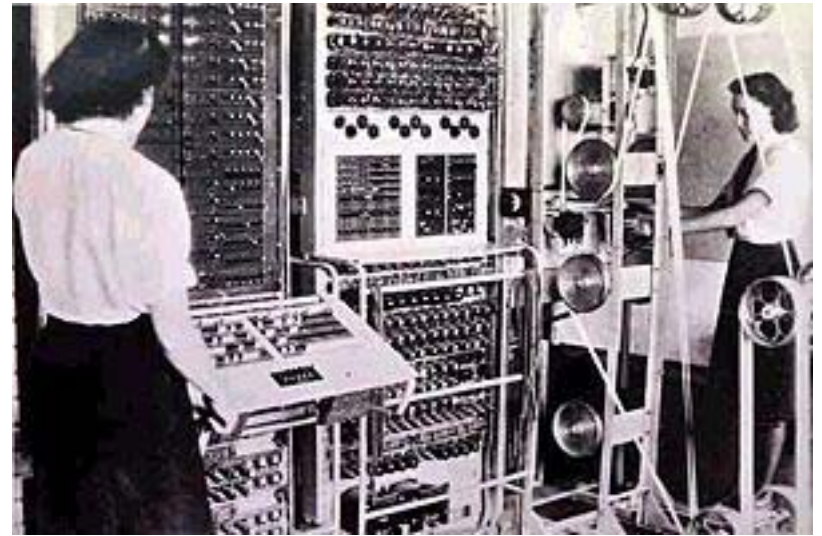


Enigma and the Bombe



Turing, Welchman, and Flowers
(based off work of Marian Adam Rejewski)

Lorenz SZ 40/42 and Colossus



Tommy Flowers with Newman

ACE

- Components
 - Dynamic Storage (500x1000 digits)
 - Temporary Storage (50x32 bits)
 - Input Organ and Output Organ
 - Logical Control
 - Central Arithmetic
 - Floating point numbers (10^{-70} to 10^{86})

ACE Control

- Memory Components
 - Control Data (PC)
 - Control Instruction (IR)
- Function
 - Fetch
 - Decode

ACE Innovations

- Led to
 - Microcontrol
 - RISC
 - Cache
 - Floating Point

AI

- Turing Test
- John Searle's Chinese room
 - Ned Block's Blockhead

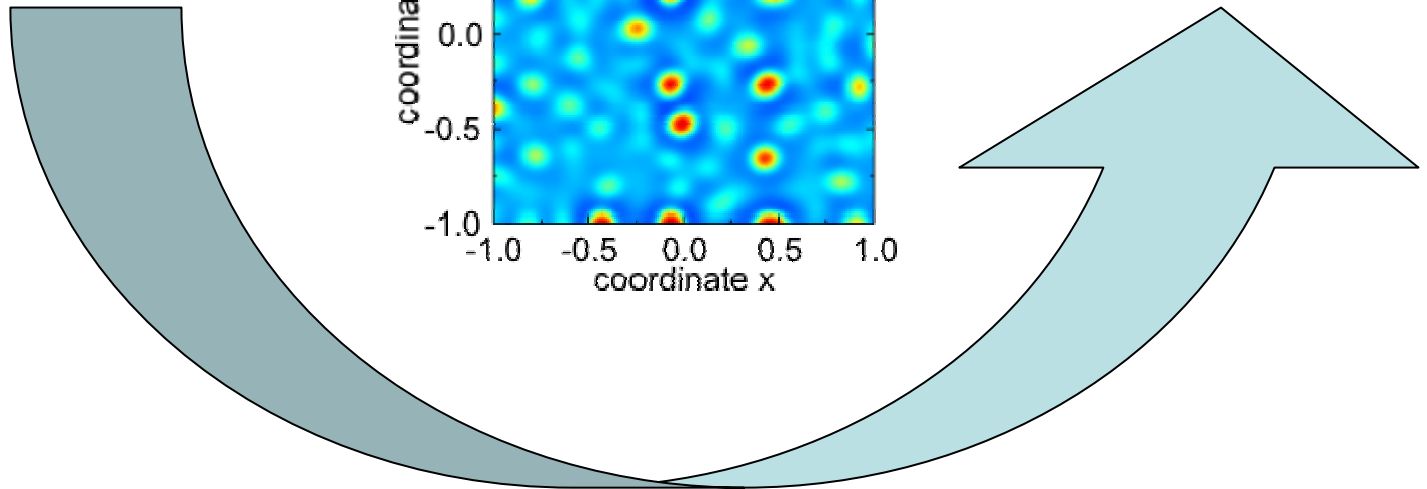
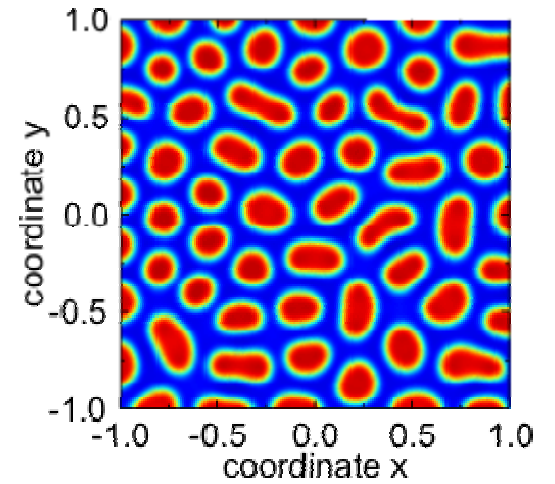
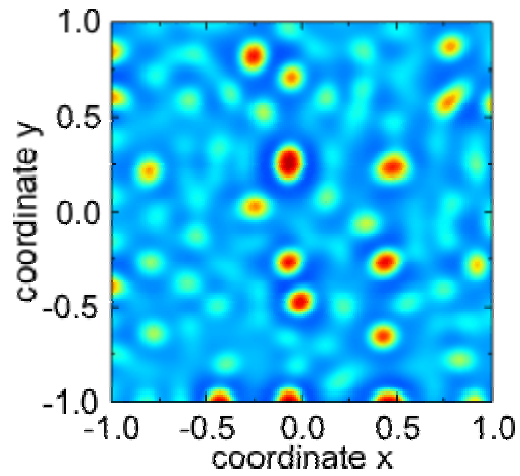
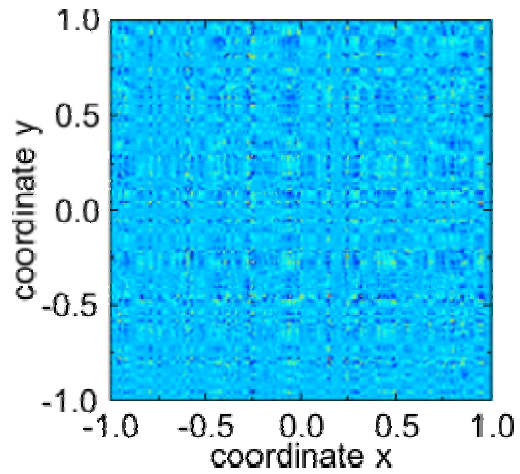
Biological Patterning

- Physiological and chemical
- Reaction-diffusion mechanism

$$U_t = DU_{xx} + R(U)$$

- Paper:
The chemical basis of morphogenesis

Example



June 7, 1954

Dip the apple in the brew
Let the Sleeping Death seep through

-Wicked Witch in
Snow White and 7 Dwarfs